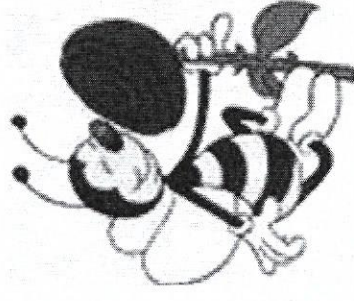
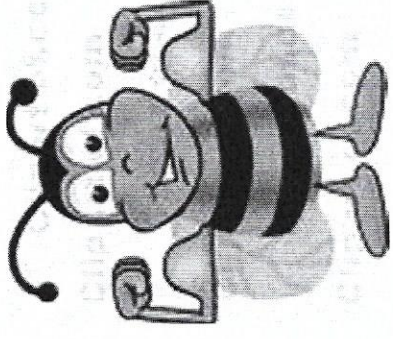


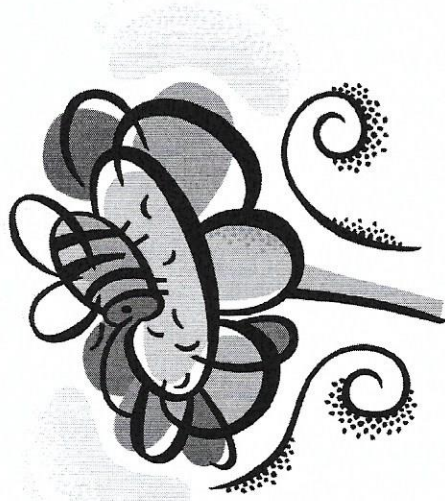
Honeybee Facts

- A single bee colony can produce more than 100 pounds of extra honey and this is what is harvested by the beekeeper.
- It takes one colony of honey bees (around 30,000 bees) to pollinate an acre of fruit trees. Pollination success increases if there are more honey bees present at the time of peak flowering.
- A colony of honey bees in early spring has 10,000-15,000 bees.
- A colony of honey bees in summer has 50,000-60,000 bees.
- A honey bee flies up to 15 mph and its wings beat 200 times per second or 12,000 beats / minute.
- A normal colony of honey bees contains only one QUEEN who may lay 2,000 eggs per day during her busy season
- There may be 60,000 or more WORKER bees (undeveloped females) who do all the work. There will also be several hundred DRONES (Male bees).
- A worker bee gathers in her entire life 1/10 tsp of honey.
- It requires 10000 worker bees to gather a pound of honey.
- Bees fly the equivalent of more than twice around the world to gather a pound of honey.
- The average life of a honey bee during the working season is about six weeks.
- Nectar as gathered by the bee contains about 70% water (Honey is about 17% water).
- Bees remove the excess moisture from nectar by rapidly fanning their wings over the open cells in the hive.
- Honey varies in color from white through golden to dark brown and usually the darker the color the stronger the flavor.
- The value of bees pollinating fruits, vegetables and legumes is 10 times the value of honey produced. Natural pollinators are disappearing rapidly and each year we become more dependent on honey bees for many of our daily foods.
- Honey is one of the safest foods - most harmful bacteria cannot live in honey for any length of time.

Honey bee's make honey!

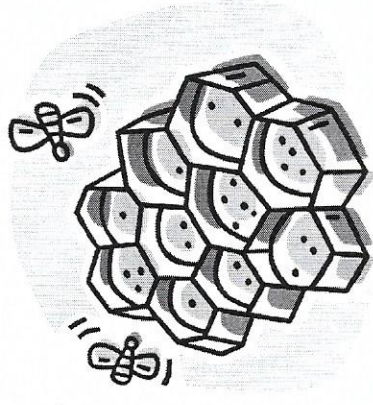
- Three types of honey bees
 - Workers: Female
 - Makes honey and feed the entire hive
 - 21 days to mature
 - Drones: Male
 - Helps the queen
 - 16 days to mature
 - Queens: Female
 - Produces eggs
 - 24 days to mature





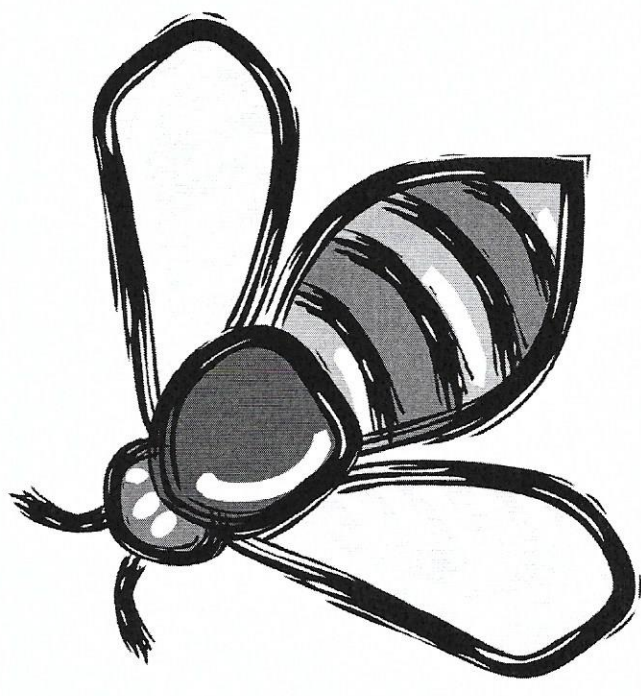
Worker Bee's

- Female bee's are the only bee's who can sting.
- Gather nectar and pollen to make honey.
- Make a waxy substance to form the honey comb.
- Mix and place the honey in the combs.
- Feed the larva.
- Live for 1-4 months.



Drone Bee's

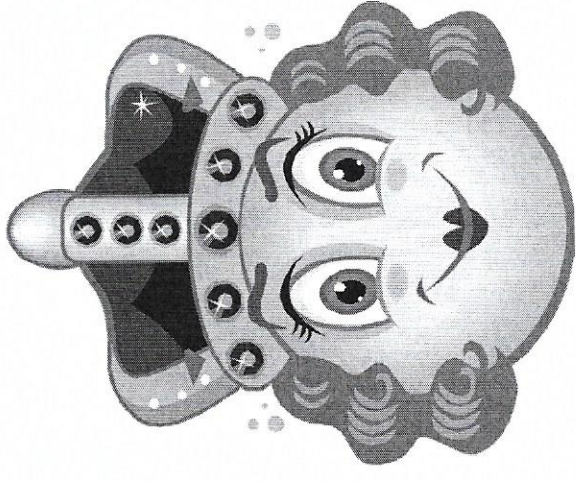
- Control who the queen is.
- In charge of making the queen happy.
- Live for 40 to 50 days.
- Never stay in one hive.



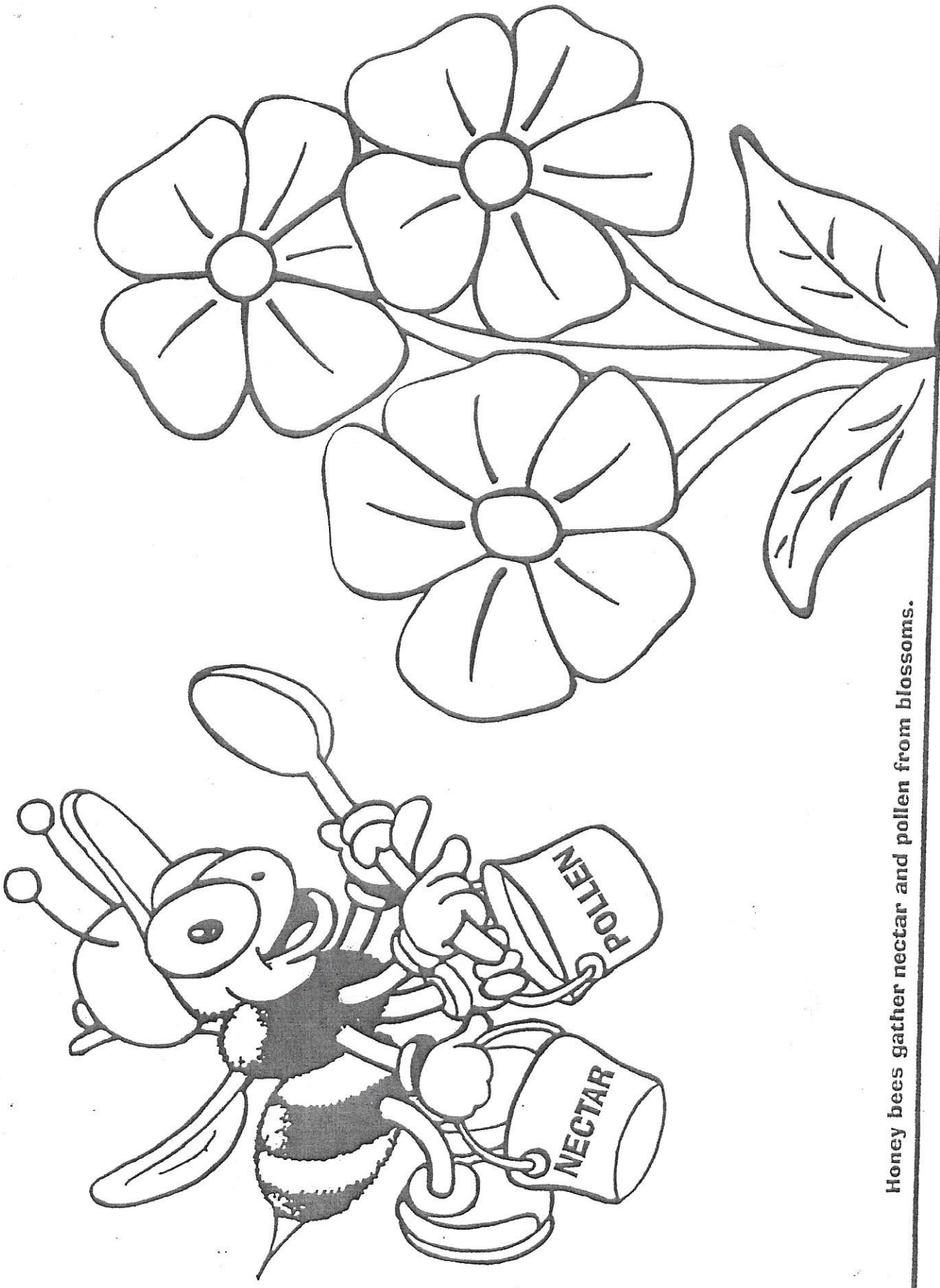


Queen Bee

- Fed royal honey
- Lays eggs
- Does not leave the hive
- 1 Queen per hive
- Lives for 3-5 years
- Can lay up to 2000 eggs a year



Busy As A Bee Coloring Sheet



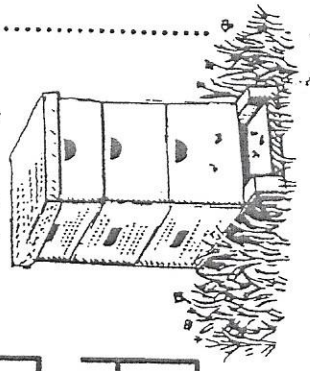
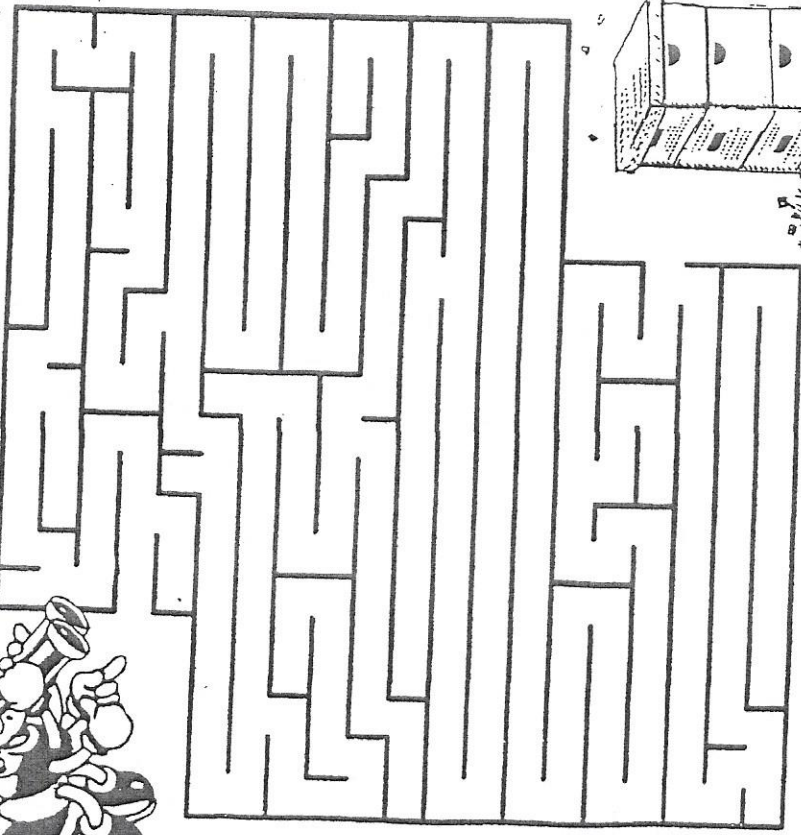
Honey bees gather nectar and pollen from blossoms.

Busy As A Bee Activity Sheet

This worker bee was out gathering nectar and pollen. Help her find the way back to her hive.



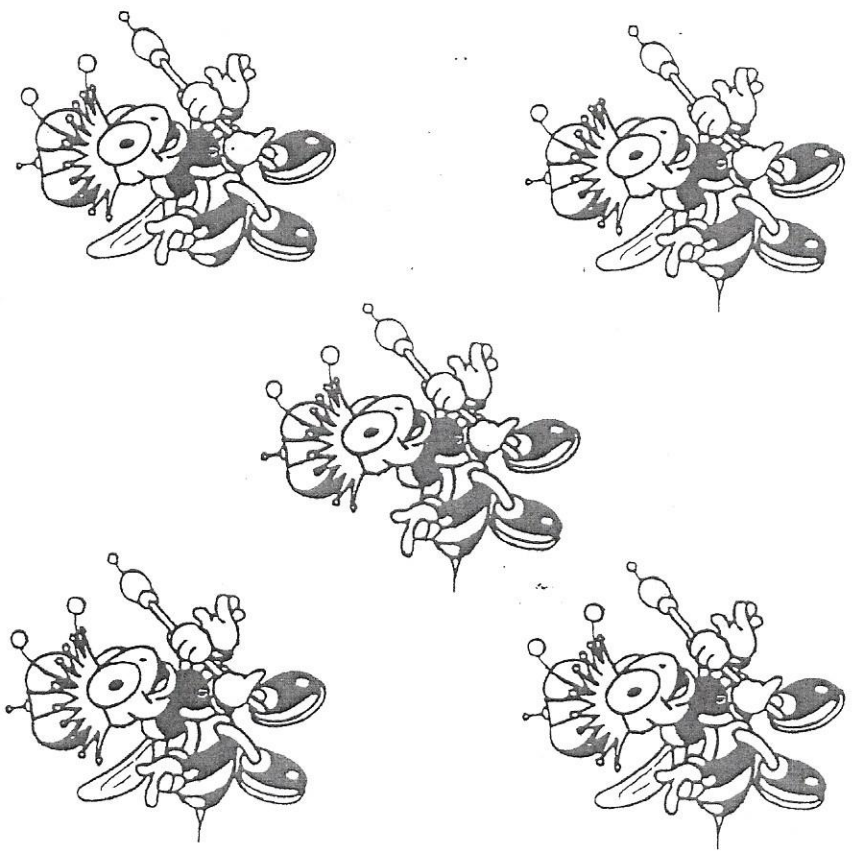
Home Sweet Home



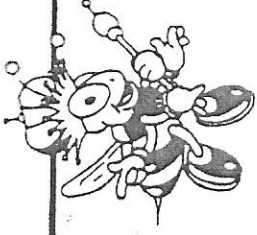
Did You Know?

Each beehive contains thousands of worker bees and drones but only one queen.

Can you circle the two bees that are exactly alike?



Busy As A Bee Activity Sheet



Honey Bee Search

Circle the following honey bee words in the puzzle below:

BEEKEEPER
BEE SWAX
BUZZ
CLOVER
COLONY
COMB
DRONE
FLOWER
FORAGE
GARDEN
HEXAGON
HIVE
HONEY
INSECT
NECTAR
PETAL
POLLEN
POLLINATION
QUEEN
WORKER

B N P O L L I N A T I O N
 J E E Y W R L T V Y F N J
 V X E L T L A C L O V E R
 E D U S L V T O C R T K T
 K R W A W O E L D K Q R C
 H O N E Y A P O Q U F O E
 I N E Y Y X N M L M B S
 V E C N G Q L Y O B Q E N
 E Y T O Y L E W U A D E I
 Q K A G M N E G R G O K Q
 B U R A B R Z K E W E E W
 U W E X X K U G K R A E C
 Z O E E S N E D R A G P L
 Z S K H N C X J O F F E Q
 F O R A G E L D W H U R U

Honey, Care to Take a Dip?



- 1 pint (16 oz.) lowfat plain yogurt
 - 1/4 cup honey
 - 2 tablespoons orange juice
 - 1/2 teaspoon grated orange peel
- Assorted fruits for dipping such as sliced apples, pears and strawberries

In a small bowl, combine yogurt, honey, orange juice and orange peel. Serve with sliced fruit.

Sweet Jokes

Use this code to answer the questions below: A=1, B=2, C=3, D=4, E=5, F=6, G=7, H=8, I=9, J=10, K=11, L=12, M=13, N=14, O=15, P=16, Q=17, R=18, S=19, T=20, U=21, V=22, W=23, X=24, Y=25, Z=26

Q: What did the worker bee use to brush her hair?

A: $\frac{(11-10)}{(6+2)}$ $\frac{(9+6)}{(7+7)}$ $\frac{(12-7)}{(21+4)}$ $\frac{(9-6)}{(17-2)}$ $\frac{(8+5)}{(4-2)}$

Q: Why did beekeeper Bob go to the doctor?

A: $\frac{(5+3)}{(10-5)}$ $\frac{(4+4)}{(4-3)}$ $\frac{(9-5)}{(12-4)}$ $\frac{(5+4)}{(25-3)}$ $\frac{(11-6)}{(20-1)}$

Q: What do bees do with their honey?

A: $\frac{(15+5)}{(10-2)}$ $\frac{(4+1)}{(19+6)}$ $\frac{(11-8)}{(12-7)}$ $\frac{(9+3)}{(15-3)}$ $\frac{(7+2)}{(25-5)}$

Fun Trivia Facts

The taste and color of honey differs depending on which flowers the bees visit.

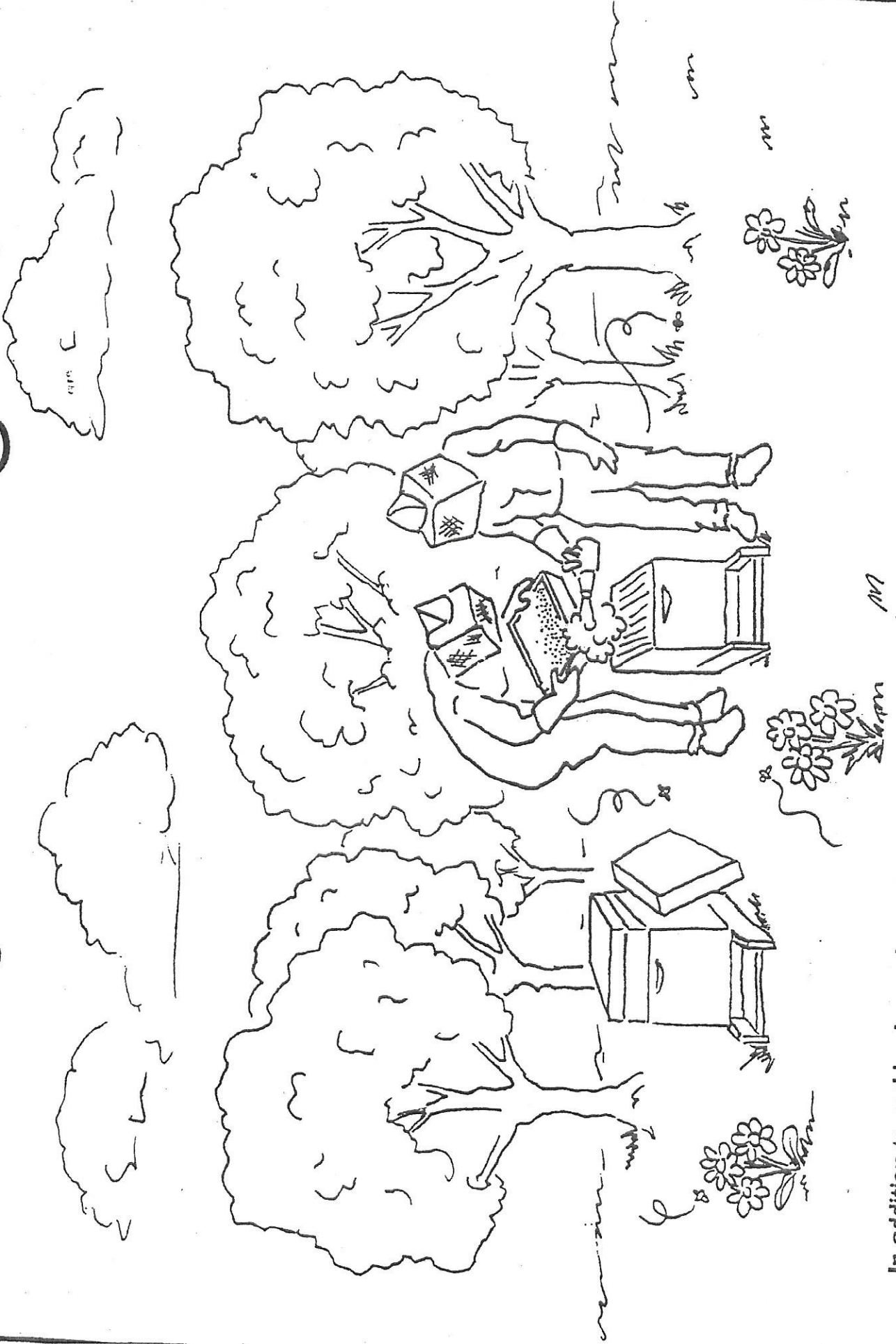
Honey bees visit two million flowers to make one pound of honey.

The raising of bees is known as apiculture.



© National Honey Board

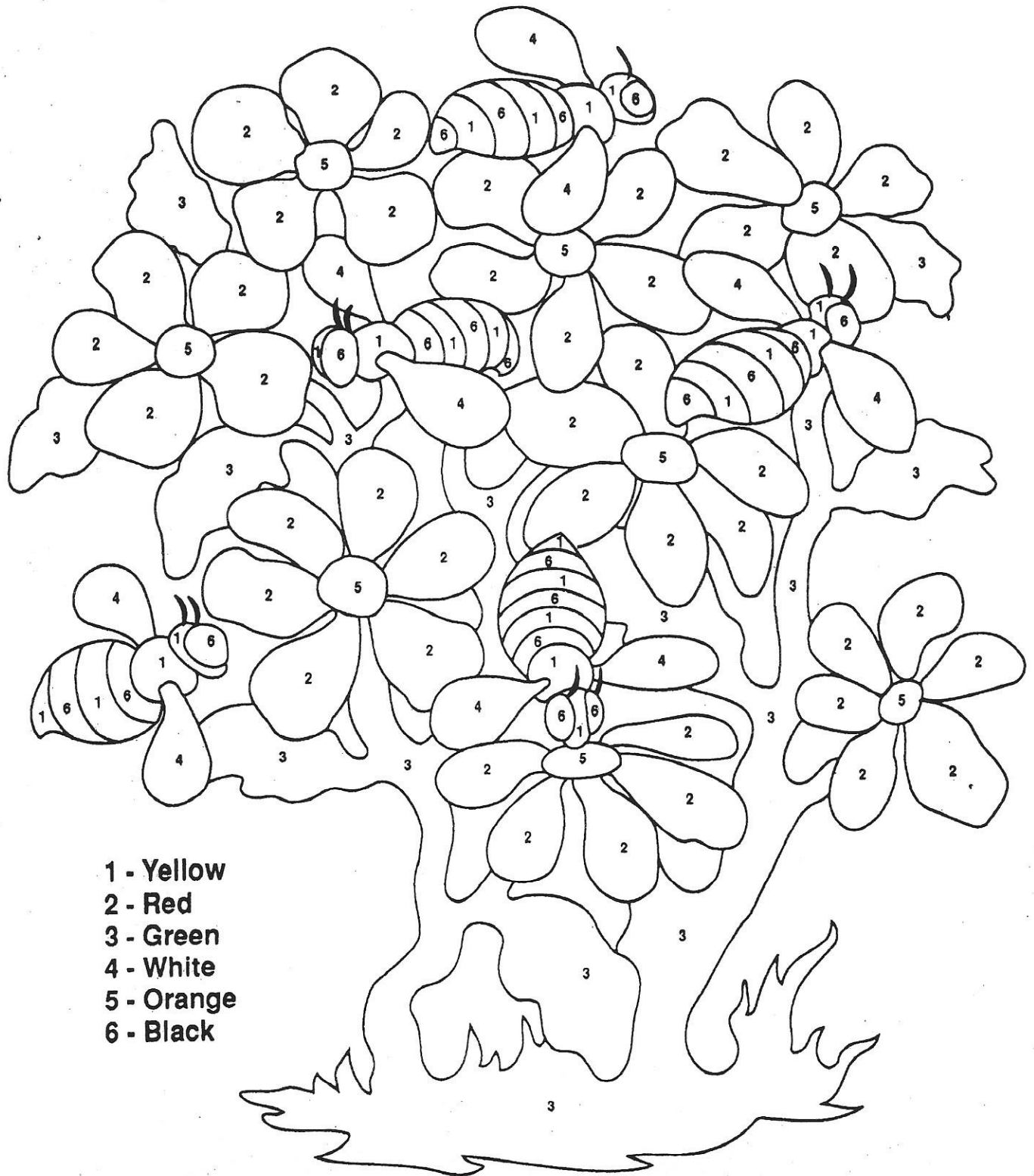
Busy As A Bee Coloring Sheet



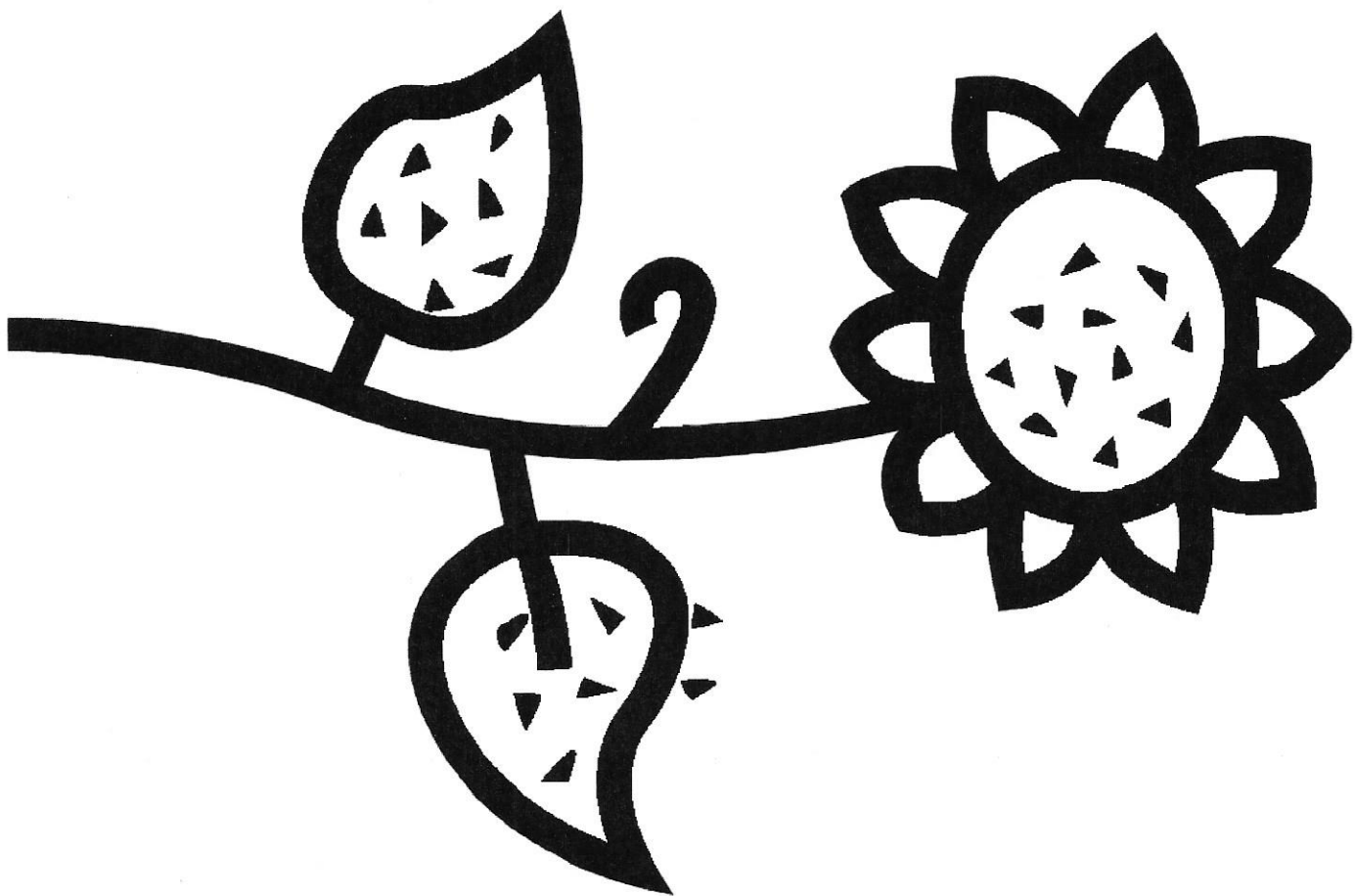
In addition to making honey, honey bees help to pollinate many fruits, vegetables, tree nuts and other plants.

Making Honey

The honeybee is very small. But its contributions to agriculture are big. Georgia honeybees make more than 3 million pounds of honey each year. They also cross-pollinate or fertilize more than 50 kinds of crops and flowers. These plants would not bear fruit or bloom without the help of honeybees. Help the bees find the flowers by coloring the picture using the color code below.



- 1 - Yellow
- 2 - Red
- 3 - Green
- 4 - White
- 5 - Orange
- 6 - Black



Bees like
sunflowers